



MYSTERY EXPLORER

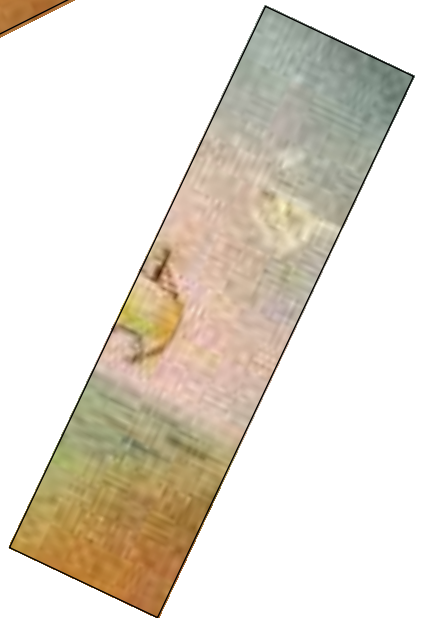
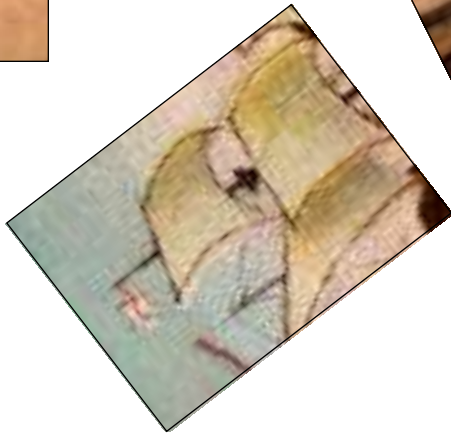
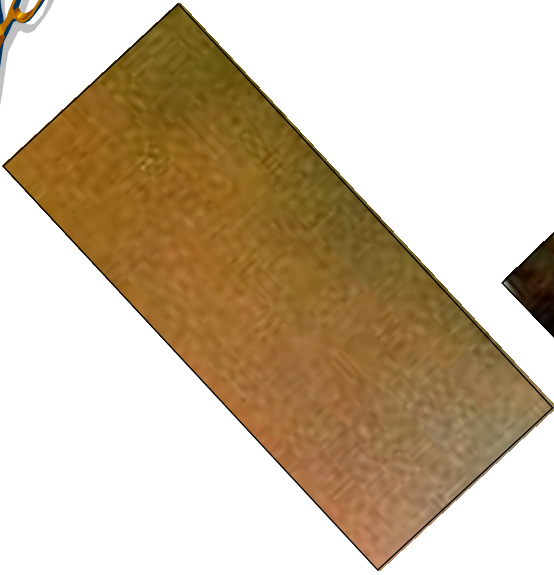
**A Quadricentennial puzzle for kids
created by the Ulster County Clerk's
Records Management Program**

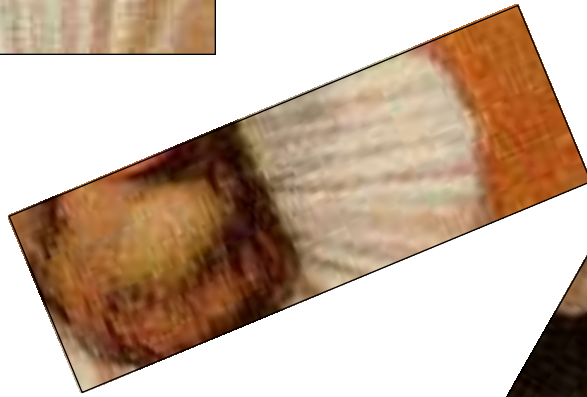
2009



**Can you guess what famous
explorer is in this puzzle?**


**Cut out all the pieces and see
if you can figure it out.**





Paste your puzzle here!





**Did you figure out who
is in the portrait?**

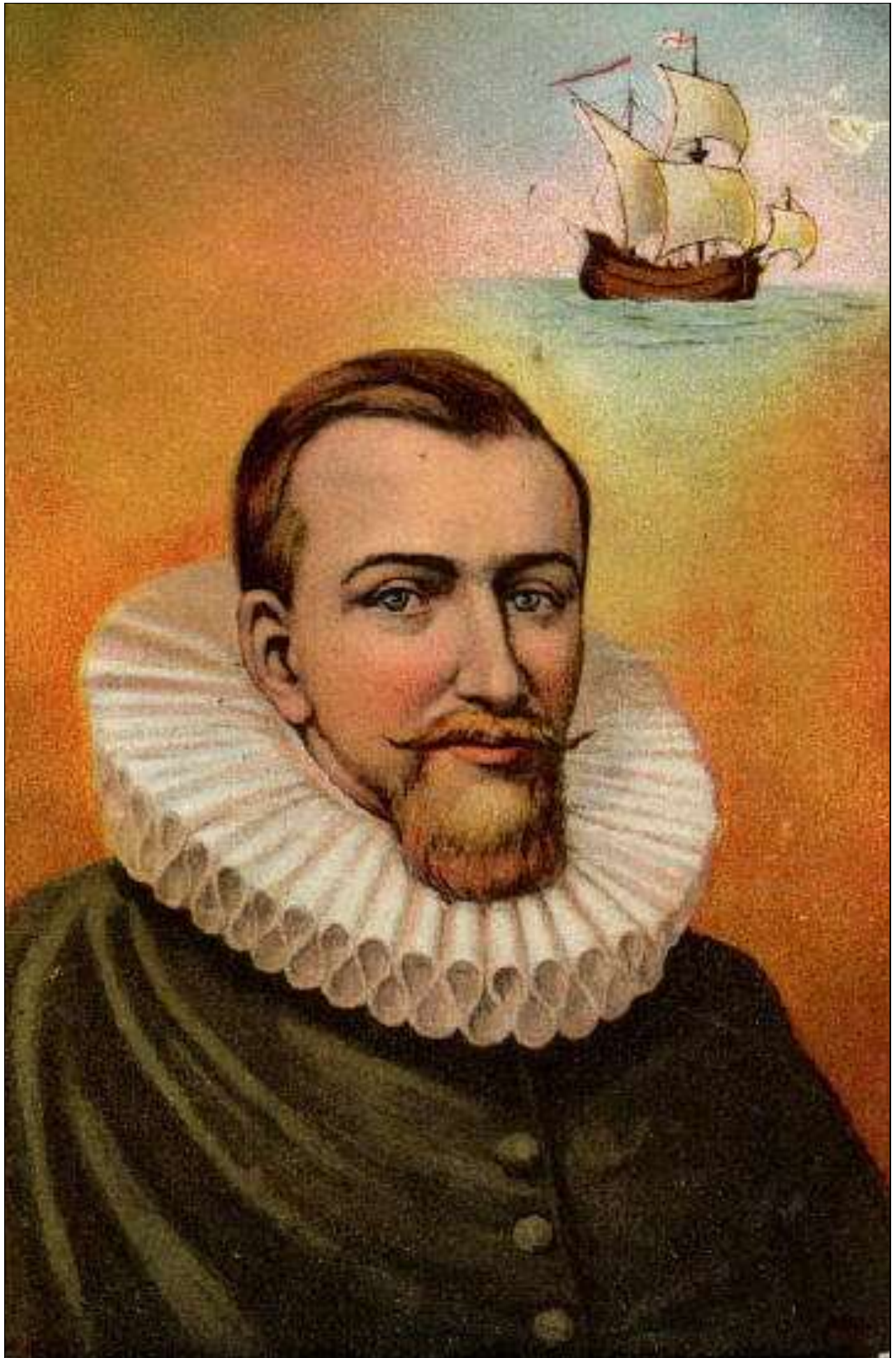
**Here's a hint:
There is a river in New York
named after him!**



**This famous explorer is
Henry Hudson!**

**The sailing ship in the upper
corner of the painting is his
ship named the Half Moon.**

**In 1609, Henry Hudson set sail from
Amsterdam, in the Netherlands, to
look for an all water route to Asia.
While on this voyage, he became the
first European to sail up the Hudson
River and he wrote a detailed
description of his voyage from New
York harbor to Albany.**



**Portrait of Henry Hudson from the collections of
the Albany Institute of History and Art**

**Biographical Information on Henry Hudson from
the Hudson River Maritime Museum website
www.hrmm.org**

**Cover art of the Half-Moon from a
Quadricentennial poster created by a 4th grade
student at Highland Intermediate School**

**For more fun activities visit the Ulster County
Clerk's Archives website!
ulstercountyny.gov/archives**